

Optional (upon request)

- 9mm chequered plate platform for even more heavy duty and durable operation. Loading capacity increased to 9,000kg
- Higher loading capacity design
- Special platform sizes
- Free standing frame dock leveler
- Edge of Dock

Accessories :

- Dock Bumper
- Dock Seal
- Control Panel
- Sectional Door
- Traffic Lights
- Vehicle Wheel Chock



COMPLETE, TAILOR-MADE PACKAGES FOR MAXIMUM PRODUCTIVITY

YOUR BEST LOADING SOLUTION



A Complete Tailor-Made Package for Maximum Productivity

PHE complete loading system facilitates warehousing industry to increase its unloading/outbound efficiencies.

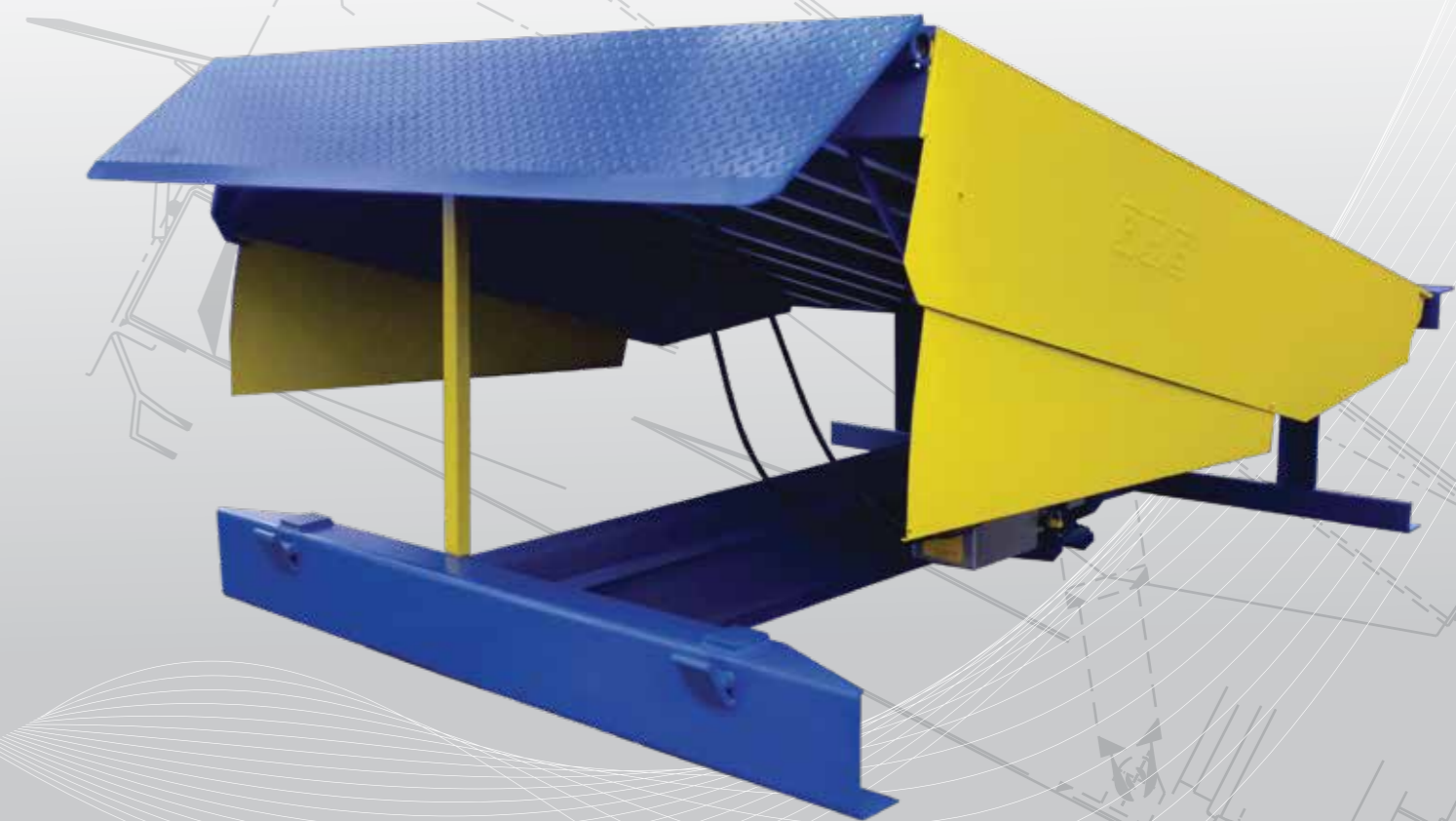
This is important as it helps to reduce operational costs and inventory storage area. It is even more imperative for distribution of perishable goods such as dairy products.

Refrigerated warehousing industries require highly reliable and efficient dock loading systems to maintain stable temperatures and reduce energy consumption.

Pictures above show a complete PHE loading system installed at a Refrigerated Warehouse which includes:

- Dock Leveler
- Inflatable Dock Seal
- Tail Lift
- Insulated Sectional Door
- Accessories: Traffic Lights, Dock Bumpers etc

DOCK LEVELER



[MALAYSIA]
 POWERMATICS HYDRAULICS & ENGINEERING (M) SDN BHD
 41050 KLANG, SELANGOR DARUL EHSAN, MALAYSIA
 TEL: (+603) 3344 8000 FAX: (+603) 3344 6000
 E-MAIL: sales@powermatics.com

[SINGAPORE]
 PH HYDRAULICS & ENGINEERING PTE. LTD.
 26, GUL WAY, SINGAPORE 629 199
 TEL: (+65) 6861 2000 FAX: (+65) 6861 5000
 E-MAIL: sales@phgroup.com.sg

www.powermatics.com



THE ELECTRO-HYDRAULIC OPERATED DOCK LEVELER

is designed to meet challenges in today's demanding warehousing and distribution facilities. Based on our strong principles of providing clients with a highly efficient and safe loading system, **PHE Dock Leveler** is designed to cater to a vast range of trailer configurations.



PRODUCT DESCRIPTION

- 1** Unique cantilever construction allows Tail Lift of the truck to rest under the platform of the dock leveler during goods loading.
- 2** Designed in a way that not only requires minimal maintenance, but also so that the installation is fast and easy.
- 3** Standard Series are available in 4 sizes.
- 4** Accessories and other optional features are also available upon request.

PRODUCT SPECIFICATION

Rated Capacity:

- 13,600kg (Standard, 6mm chequered plate platform)
- 22,700kg (Upon Request, 9mm chequered plate platform)

Dynamic Factor: Min. 2.0
(Consult for more info)

Lip length: 406mm

Power Supply:
2HP/6Amp/3-Phase/415V/50Hz

Control Type: Auto, Single Push Button

PRODUCT HIGHLIGHTS & SAFETY FEATURES



I. Low-pressure hydraulic system

- Increases reliability

II. Front lip

- Heavy-duty, 12mm chequered
- Night security barrier when in cross-traffic position

III. Inverted hydraulic cylinder

- Enhances & prolongs performance

IV. Overload protection device

- Protects hydraulic pump

V. Automatic parking into cross-traffic position when the truck drives off

VI. Full width, self cleaning and heavy-duty tube hinge

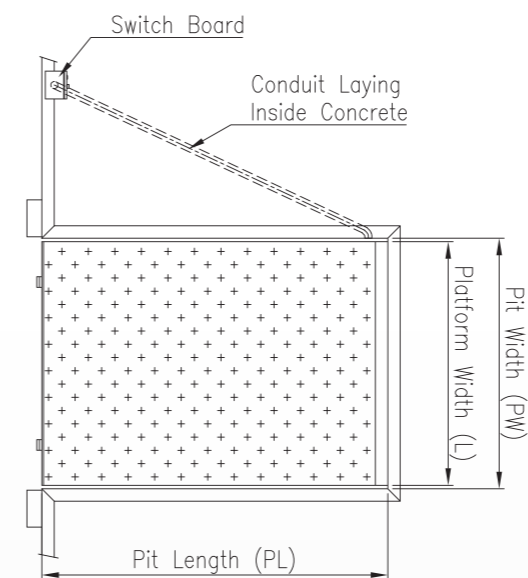
VII. Safety stop in case of hose burst, or if truck unintentionally drives off during loading

VIII. Built-in maintenance prop for maintenance works

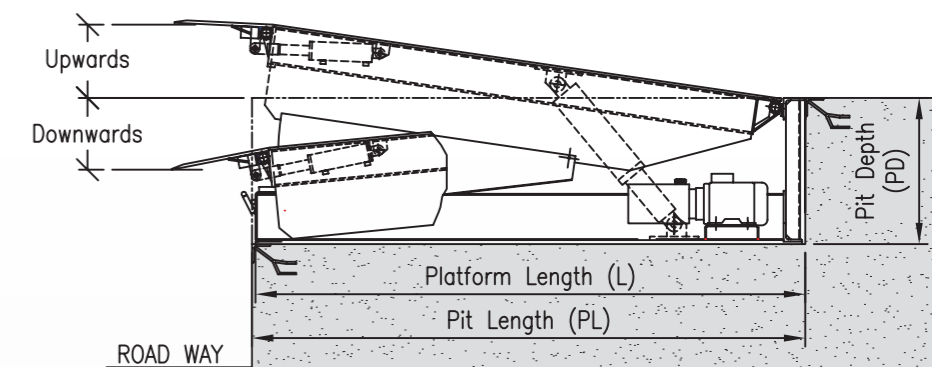
IX. Each dock leveler comes with

- Comprehensive Operation & Maintenance manual
- Warning sign for safe operation

X. Safety yellow toe guards throughout full operational range of dock leveler and alerting cross-traffic of forklift



Plan view



Side view

MODEL	PLATFORM DIMENSION		PIT DIMENSION			OPERATING RANGE			
	LENGTH (L) mm	WIDTH (W) mm	LENGTH (PL) mm	WIDTH (PW) mm	DEPTH (PD) mm	UPWARDS mm	UPWARDS degr (°)	DOWNWARDS mm	DOWNWARDS degr (°)
PHE 221859	2250	1830	2260	1880	600	300	8.0	300	6.0
PHE 241859	2440	1830	2450	1880	600	300	7.5	300	5.0
PHE 301859	3000	1830	3010	1880	600	300	6.0	300	4.0
PHE 302159	3000	2130	3010	2180	600	300	6.0	300	4.0